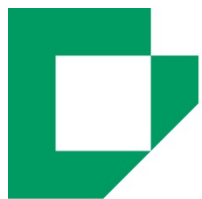


Welcome to



NIPPON DESIGNERS SCHOOL



About us

About Go Educational Foundation (GEF)



学校法人呉学園 専門学校

日本デザイナー学院

- ✓ Since 1965
- ✓ 8 Majors

■ Nippon Designers School (Tokyo)

- Graphic Design (2-year course, 3-year course)
- Content Design (3-year course)
- Illustration (2-year course, 3-year course)
- Animation (3-year course)
- Comic Illustration (3-year course)
- Manga (3-year course)



学校法人九州呉学園 専門学校

日本デザイナー学院九州校

- ✓ Since 1968
- ✓ 8 majors

■ Nippon Photography Institute (Tokyo)

- Photography (3-year course)
- Photography (2-year course)

■ Nippon Designers School Kyushu (Fukuoka)

- Graphic Design (3-year course)
- Illustration (3-year course)
- Interior Design (3-year course)
- Game Creator (3-year course)
- Comic Illustration (2-year course)
- Manga (2-year course)
- Movie & Photography (2-year course)
- Goods & Accessory Design (2-year course)

The Tokyo schools are located in Shibuya

In 2014, Shibuya was designated as a special zone for creativity.

About 500,000 people come and go through Shibuya's Scramble Crossing each day and digital signage always has the latest advertisements. You can learn skills as a creator in the exciting creative city Shibuya.



学校法人学園 専門学校
日本デザイナー学院



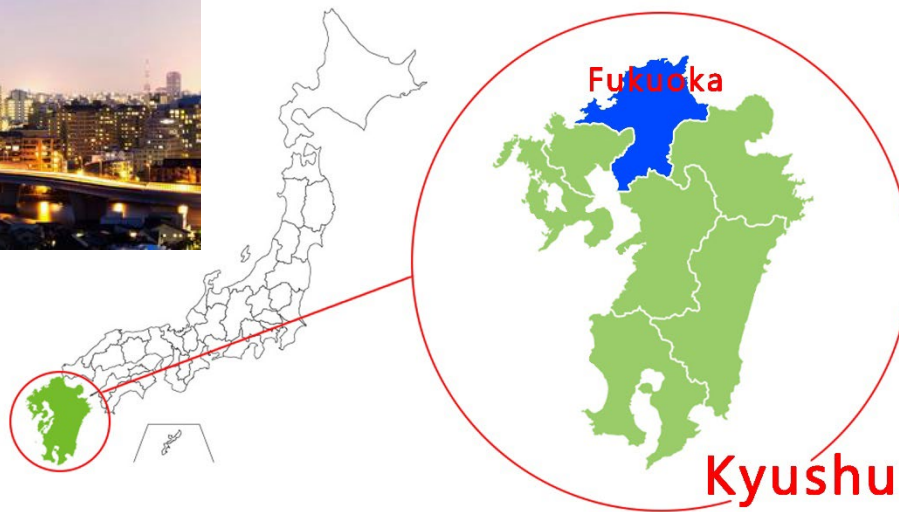
学校法人学園
日本写真芸術専門学校

The Kyushu school is located in Fukuoka

The campus is in “Fukuoka: the city of global start-ups”

Fukuoka is working on various initiatives to become a leading city in Asia and has a thriving creative industry!

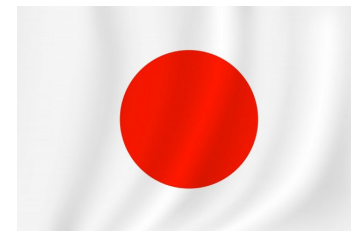
Fukuoka Hakata attracts attention from all over the world thanks to its many major game, film production and other numerous creative companies.



学校法人九州学院 専門学校
日本デザイナー学院九州校

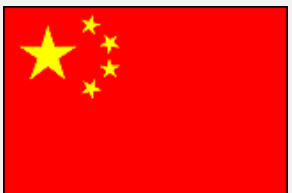
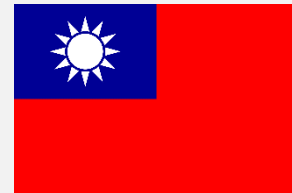
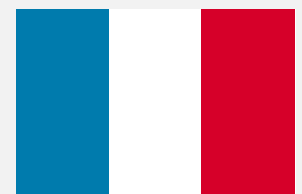
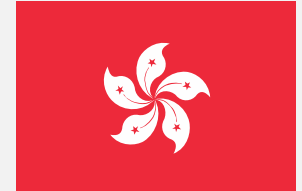
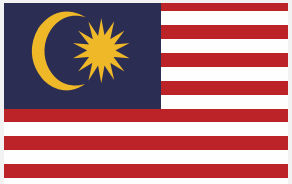


Alumni



**Over the past 50 years,
approx. 35,000 students
have graduated from
NDS and NPI**

Foreign Students



Our Philosophy



Real Education

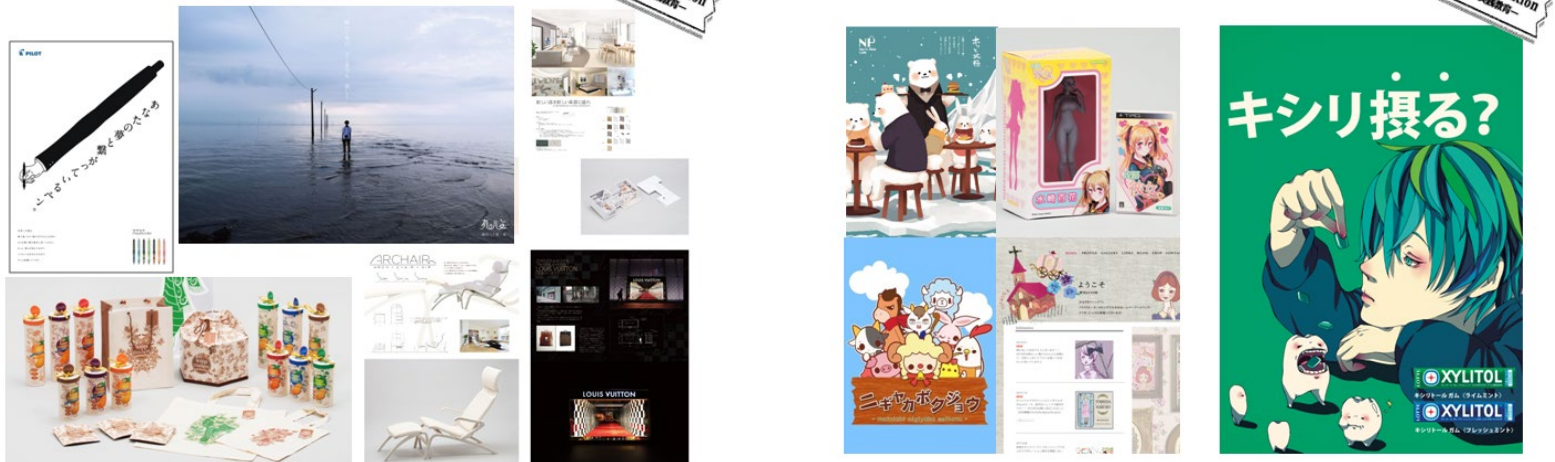
Leading edge educational content in practical, hands-on classes, so you experience 'today's' design and photography first-hand



Our Education

■ Highly professional training programs

By closely working with top creators from creative business fields, students can obtain professional skills and knowledge which they can utilize for their career.



Example of works by students

① Friendly structure for beginners

② Polish your own expression

③ Connect with Society

① Friendly structure for beginners

The curriculum allows you to steadily improve your skills by learning hands-on each task and building a strong foundation to 'experience growth'.

Before



After



② Polish your own expression

Teachers work with students on an individual basis to help refine your own unique style and vision.



Student works

③ Connect with society

The schools collaborate with various companies and stores for lessons where you can learn what is actually desired by society.

<キャラクター名>

しづいやぎ

<プロフィール> 好きな物: 切符

性格: 穏やか 特長: 線路の角, ほ, ペ



JR Shibuya Station



Kirin Holdings Company, Limited

**About
our career center**

Career center

① Employment support events

② Debut support events

③ Career support tailored to each individual

① Employment support events

■ On-campus company information sessions

We invite corporate recruiters and graduates to explain about various job opportunities and the corporate culture.

Portfolio seminar



Corporate research and briefing sessions

② Debut support events

■ Comic week (manga review meeting)

We invite editors from various major publishing companies (Shueisha, Kodansha etc.) to read and review students work.

Feedback meetings on work and special lecture by professional editor



③ Career support tailored to each individual

■ Individual counseling and job hunting support

- Continued support throughout the job hunting process
- Special career support website
- Speedy communication via email
- Interview and resume advice



Mock interview



Career center website



Career guidance

**Admission
&
Application Conditions for
International Students**

Admission and application conditions for international students

■ Classes begin in April, when the cherry blossoms are in bloom.(It is not possible to transfer to the school at another time.)



How to apply

■ Application conditions

- ① Have completed 12 years of education in their home country.
(equivalent to graduating high school in Japan)

※In the case you have only finished 11 years of education, you can apply after studying for 1 year at a Japanese language school in your home country.



- ② Sufficient Japanese language proficiency.
(All lessons are in Japanese only. It's not possible to take lessons in English)

How to apply

■ Application conditions

③ Those who are 18 years of age or older at the time of admission and who meet one of the following conditions:

- Have studied Japanese for one year or more at a Japanese language school accredited by the Japanese Language Education Promotion Association
OR
Are enrolled in a Japanese university and maintain good grades & attendance.
- Have obtained one of the following:

にほんごのうりょくしけん

日本語能力試験

JLPT Japanese-Language Proficiency Test

- N2 or higher of the JLPT

日本留学試験 EJU

Examination for Japanese University Admission for International Students

- Score of 200 points or more on the EJU

BJT Business Japanese Proficiency Test

- Score of 400 points or more on the BJT

Scholarships

International scholarship student incentive

A scholarship for international students who score 85 points or higher on the Japanese entrance examination, taken prior to enrolling.

School Fees

Nippon Designers School (Tokyo)

	3-Year Course	2-Year Course
	<ul style="list-style-type: none"> ●Comprehensive Design/ <ul style="list-style-type: none"> ▪ Graphic Design ▪ Content Design ●Comprehensive Illustration ●Comprehensive Animation & Digital Illustration ●Comprehensive Manga ●Comprehensive Comic Illustration 	Graphic Design Illustration
Admissions Fee	JPY 180,000	JPY 180,000
Tuition	JPY 800,000	JPY 800,000
Facility Fee	JPY 250,000	JPY 170,000
Practical Training Fee	JPY 160,000	JPY 140,000
Total Fees	JPY 1,390,000	JPY 1,290,000
Second year payment	JPY 1,210,000	JPY 1,110,000
Third year payment	JPY 1,210,000	

Other

Study Tour Reserve Fund, Healthcare Fee, Alumni Association Fee, Graduation Related Fees

School Fees

Nippon Photography Institute (Tokyo)

	3-Year Course	2-Year Course
	<ul style="list-style-type: none"> ▪ Comprehensive Photography Research Seminar ▪ Photo Fieldwork Seminar ▪ Photo Art Seminar 	Photography Course
Admissions Fee	JPY 180,000	JPY 180,000
Tuition	JPY 860,000	JPY 860,000
Facility Fee	JPY 190,000	JPY 190,000
Practical Training Fee	JPY 170,000	JPY 170,000
Total Fees	JPY 1,400,000	JPY 1,400,000
Second year payment	JPY 1,220,000	JPY 1,220,000
Third year payment	JPY 1,320,000	

Other

Study Tour Reserve Fund, Healthcare Fee, Alumni Association Fee, Graduation Related Fees

School Fees

Nippon Designers School Kyushu (Fukuoka)

	Postsecondary Course I (Daytime / 3 Year Curriculum)	Postsecondary Course I (Daytime / 2 Year Curriculum)
	Graphic Design Course Illustration Course Interior Design Course Game Creator Course	Comic Illustration Course Manga Course Movie and Photography Course Goods and Accessory Design Course
Admissions Fee	JPY 180,000	JPY 180,000
Tuition	JPY 700,000	JPY 700,000
Facility Fee	JPY 110,000	JPY 110,000
Practical Training Fee	JPY 160,000	JPY 160,000
Total Fees	JPY 1,150,000	JPY 1,150,000
Second year payment	JPY 970,000	JPY 970,000
Third year payment	JPY 970,000	

Other

Study Tour Reserve Fund, Healthcare Fee, Alumni Association Fee, Graduation Related Fees

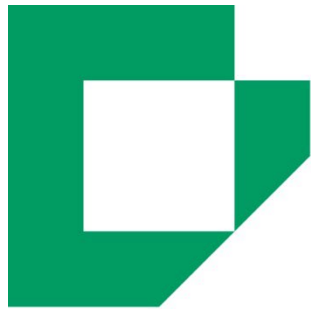


学校法人九州呉学園 専門学校

日本デザイナー学院九州校

That's all!

Thank you for watching!



**NIPPON
DESIGNERS
SCHOOL**

またね！